



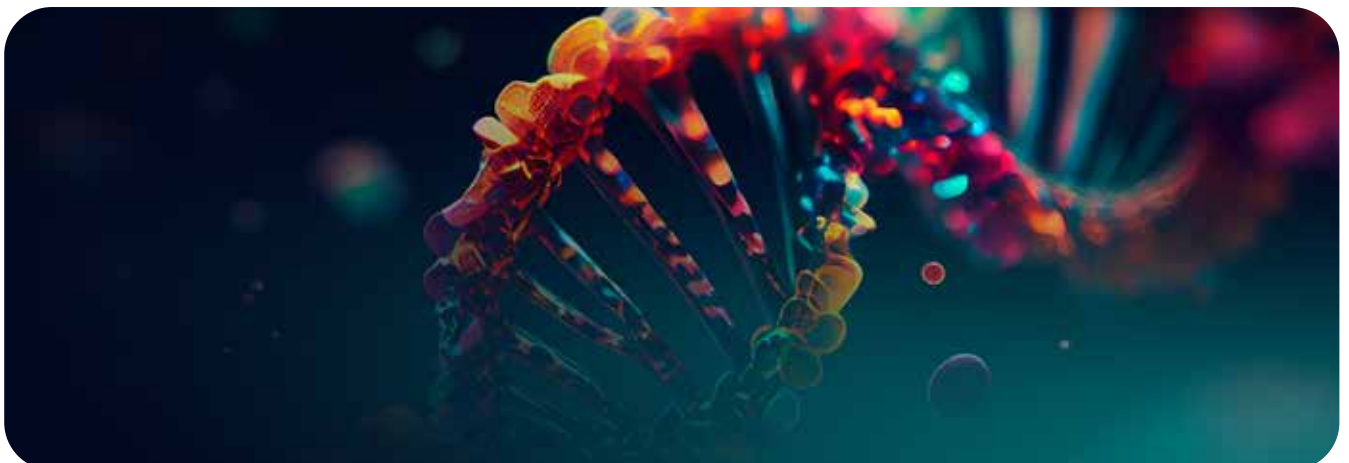
HLA TYPiNG BY NGS

Genes2Me HLA typing NGS panel generates unambiguous, phase-resolved HLA typing results and can provide critical insight into immune disorders. DNA extracted from the blood of transplant recipients or donors is evaluated for histocompatibility antigens, such as Class HLA-A, B, C; Class II: HLA DPA1,DPB1, DQA1, DAQB1, DRB1/3/4/5.

It is a high-resolution allele identification precision diagnostic panel that aids in the selection of the best donor.

The HLA region which is the most densely polymorphic region of the genome can be sequenced accurately with our HLA typing NGS panels.

Loci	11
Covered region	Whole CDS
Target size	71 kb
Mutation type	Allelic Polymorphism
Sample type	Blood



HLA TYPING BY NGS

Genes Targets

Class I: HLA-A, HLA-B, HLA-C;

Class II: HLADPA1, HLADPB1, HLADQA1, HLADAQB1, HLADRB1, HLADRB3, HLADRB4, HLADRB5.

ASSAY PERFORMANCE

Features	Performance [#]
Coverage uniformity	97%
Precision	95%
Reproducibility	98%
Sensitivity	95%
On Target Ratio	87-95 %

: The observed values are for Illumina platform
VAF - Variant Allele Frequency



Genes2Me Pvt. Ltd.

1105, 11th Floor, Tower B, SAS Tower, Medicity,
Sector - 38, Gurgaon - 122 001, Haryana, India
Tel : + 91 18001 214030 / + 91 88000 23600
E-mail : contact@genes2me.com
www.genes2me.com

